

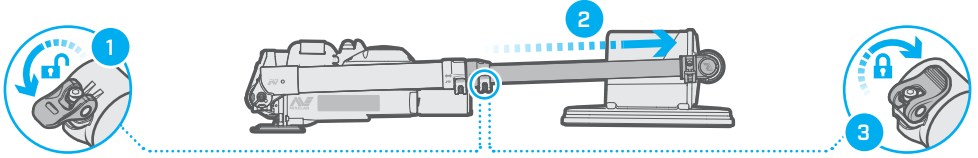
Field Guide

MDS-10T Dual Sensor Detector

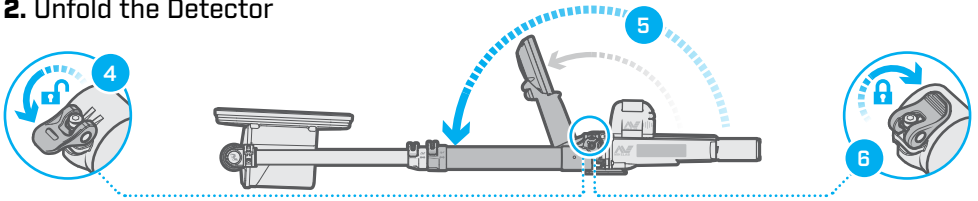
MDS-10T

MDS-10T Unfolding Procedure

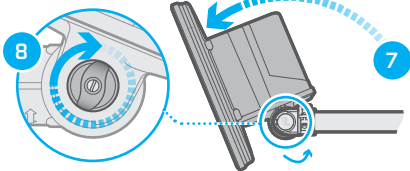
1. Extend the Lower Shaft



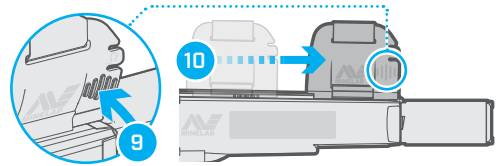
2. Unfold the Detector



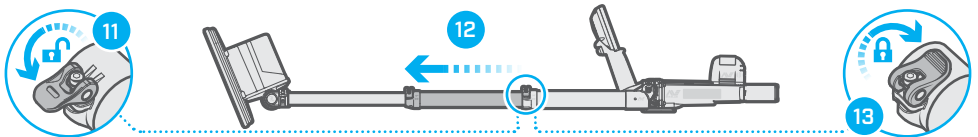
3. Unfold the Sensor Head



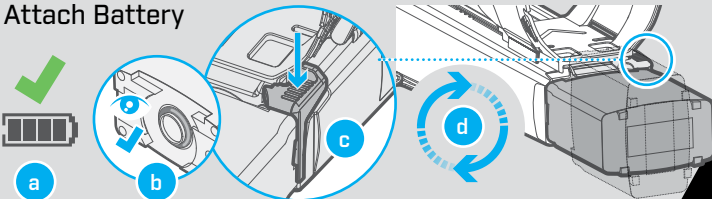
4. Position the Armrest



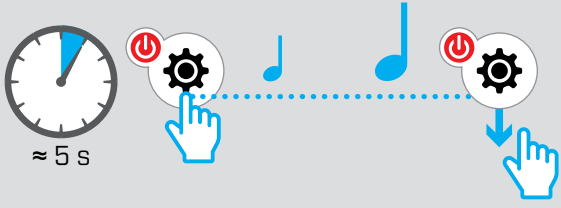
5. Extend the Middle Shaft



Attach Battery

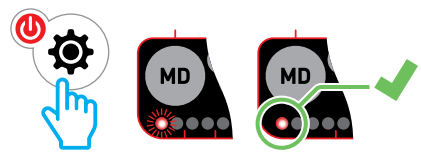


Factory Reset

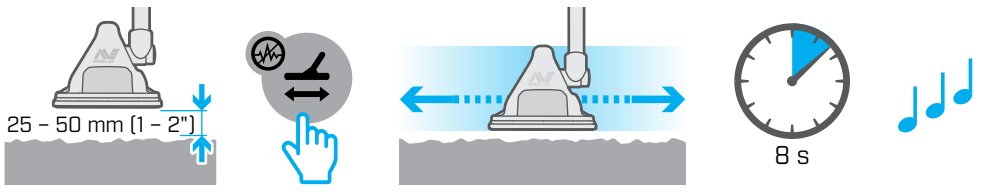


Quick Start

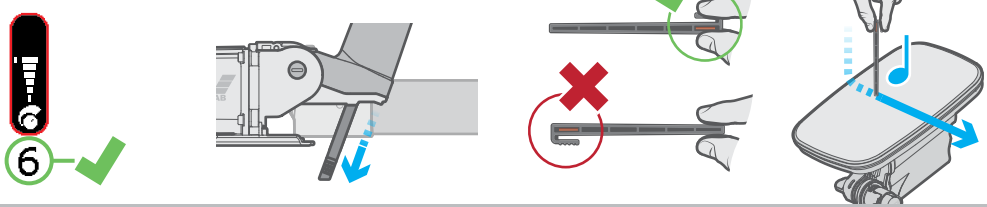
1. Turn On



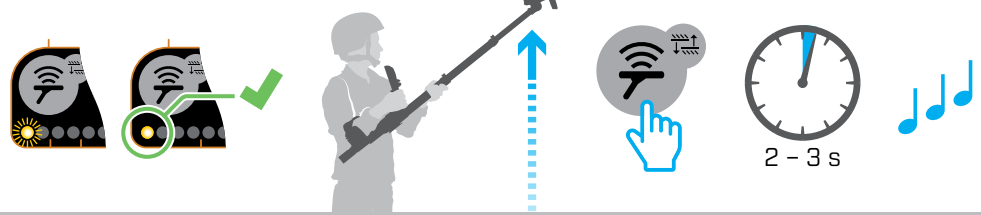
2. MD Ground Balance



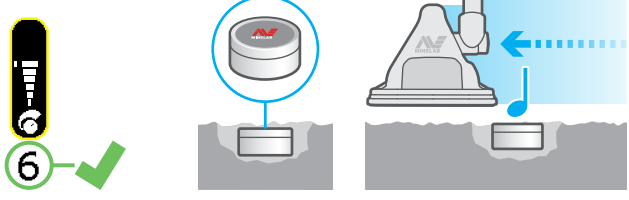
3. MD Test Piece



4. GPR Skyshot



5. GPR Test Target



6. Begin Detecting

